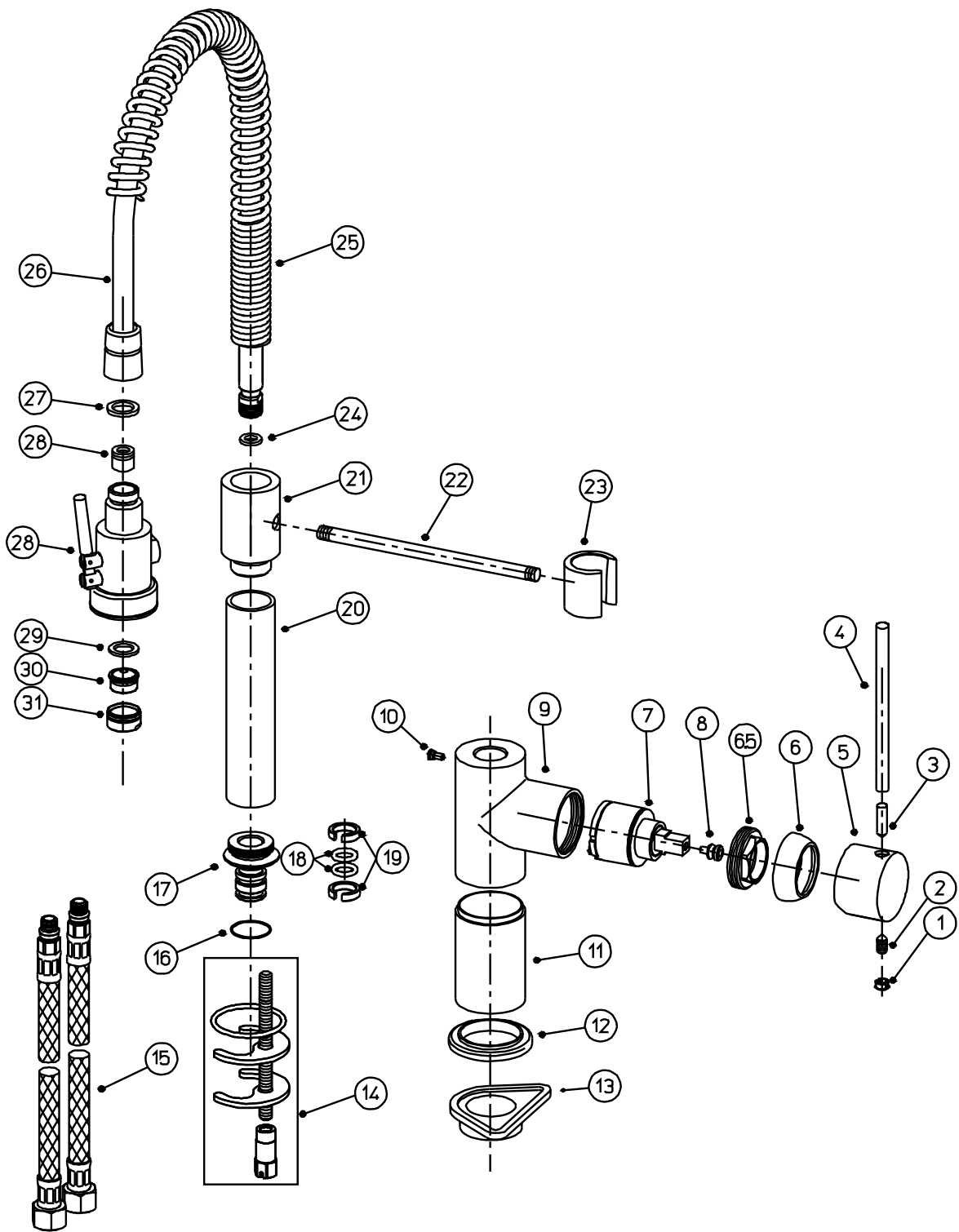


TAP9155 – Professional

Key:	Description:	APX size (mm):	Base material:	Colour:	QTY:
1	Dust cap		Plastic	Chrome	1
2	Grub screw		Brass	Silver	1
3	Handle lever grub screw		Brass	Silver	1
4	Handle lever		Brass	Chrome	1
5	Handle body		Brass	Chrome	1
6	Lock nut cover		Brass	Chrome	1
7	Lock nut		Brass	Brass	1
8	Valve extension				1
9	Tap body		Brass	Chrome	1
10	Spout grub screw		Brass	Chrome	1
11	Tap base column	42OD x 76mm	Brass	Chrome	1
12	Base plinth	50OD x 6.5mm	Brass	Chrome	1
13	Stabilising plate	88 x 58	Plastic	White	1
14	Fixing Kit		N/A	N/A	1
15	Hot & cold tail pipes	M10 x 1/2" F x 570mm	Rubber, Brass, Inox	N/A	2 total
16	Anti friction spacer			White	1
17	Spout seat		Brass	Brass	1
18	Spout O-rings		Rubber	Black	2
19	Anti friction spacer		Plastic	White	2
20	Spout upright		Brass	Chrome	1
21	Spout adaptor		Brass	Chrome	1
22	Spout arm	8 OD x150mm (exposed)	Brass	Chrome	1
23	Spray holster	32OD x 30	Brass	Chrome	1
24	Rubber Seal	M15	Rubber	Black	1
25	Spout spring	24OD	Stainless steel	Stainless steel	1
26	Spout Hose	M15 x 1/2" F x 450mm apx.	Rubber, Brass, Inox	Stainless steel	1
27	Rubber washer	1/2"	Rubber	Black	1
28	Sprayhead & nrv		Brass	Chrome	1
29	Rubber Seal		Rubber	Black	1
30	Aerator				1
31	Aerator housing		Brass	Chrome	1



TAP 9155 - Professional service drawing v1

(c) abode home products ltd
www.abode.au

our policy is to continually
improve and develop products,
and accordingly we reserve the
right to amend specifications
without prior notice

General Advice:

- These instructions are intended as a guide only, if you are in any doubt you should seek the advice of a qualified professional.
- Take care not to mark finished parts with screwdrivers or other tools.
- Use a pair of rubber gloves to get a better grip on decorative hand tight parts.
- Ensure all parts are reassembled tightly.
- After maintenance test that all assemblies are water tight and function correctly.
- Always isolate the hot and cold water supplies before starting any maintenance, once isolated you should drain any residual water from your system.

To replace the valve:

1. Turn the handle (4) backwards.
2. Remove dust cap (1).
3. Loosen grub screw (2) using a 2.5mm A/F Allen key.
4. Pull the handle (4,5) horizontally away from the tap.
5. Unscrew the decorative valve cover (6) by hand.
6. Hold the body of the tap (B1) firmly. Using an adjustable spanner unscrew the valve lock nut (7).
7. Pull the old valve cartridge (7) away from the tap.
8. Ensure that the valve chamber (9) is clean of dirt and grit.
9. Place the new valve (7) in the chamber (9), ensuring the locators on the base of valve (7) align with the recesses in the chamber of the tap (9).
10. Reassemble the tap in the reverse order.

To replace the spray head (A4):

1. Hold spout nut (26) and unscrew sprayhead (28). take care not to loose rubber seal (27).
2. Reassemble the tap in the reverse order.